



SMARTAEGIS

SmartPass Face Recognition Access Control Terminal (7")

SmartEye-SW-4K-7 is a facial recognition terminal of the SMARTAEGIS hardware product family. This device provides a safe, fast, and smooth passing experience for customers by its cutting-edge algorithm based on deep learning, and the infra+RGB cameras. It is mainly applied in the security access control scenarios of mansion lobby, school, airport and logistic center, etc. This device is waterproof and dustproof.



Product Features



Recognition

50,000 face capacity, accuracy > 99.8%, speed ≤ 300ms.



Light Adaptability

Working in different light environment, even in 0 lux dark scene.



Multifunction

Supporting multiple authentication such as card and QR codes.



Integration

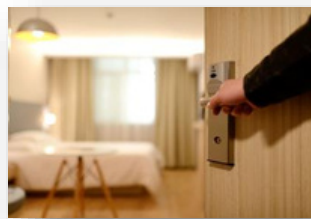
Rich REST API and SDK make integration very easy and friendly.



Application Scenarios



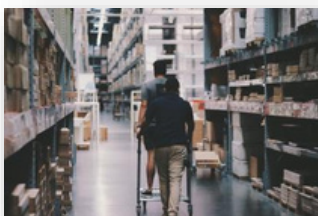
University Campus : Attendance



Hotel : Seamless Check in



Office : Secure Entry



Warehouse : Safe Access



Smart Locker



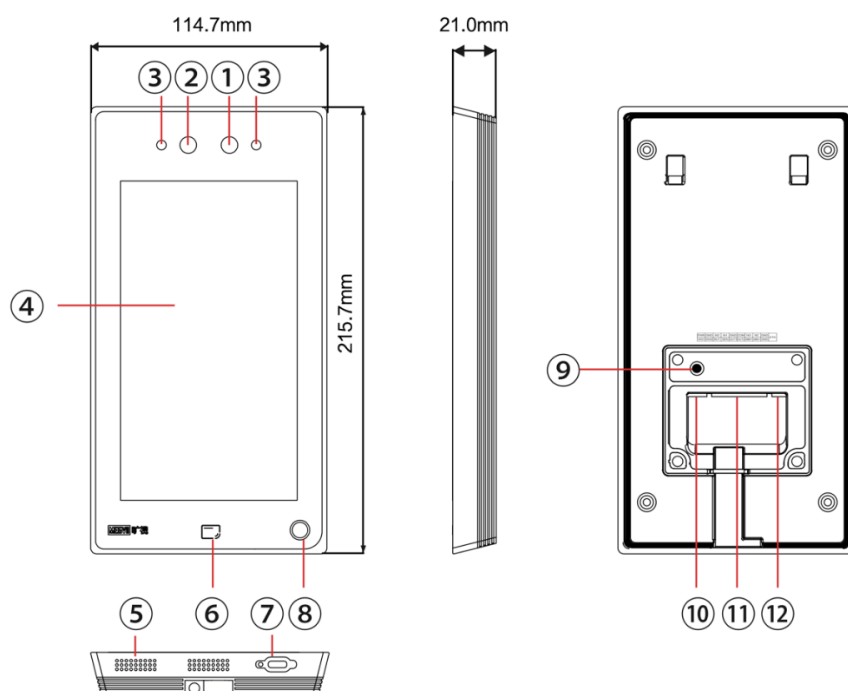
Dormitory : Secure Living

Specification

Model: SmartEye- SW-4K-7

System		Face capacity	50,000
Operation system	Linux	Password capacity	50,000
Main Processor	Embedded Processor Hi3516 DV300	Event capacity	50,000
RAM	1G	Personnel group	128
ROM	4G	Authentication	
Network Protocol	IPv4, TCP, UDP	Authentication method	Face/Card/Password/QR code, Face+Card, Face+Password
Open API	Support	Card type	Mifare
Display		Card reading distance	0 to 2 cm
Screen Size	7-inch	Card reading speed	< 1 s
Screen Resolution	1024 x 600	Face recognition distance	0.3 to 2 m
Screen Type	Capacitive touch screen	Face recognition speed	< 0.2 s
Status indicator	Breathing lamp design Normal recognition: Blue light flashes 4 times; No permission: Green light flashes 4 times; Other conditions: White light always on	Face recognition accuracy	≥99.8%
Video & Audio		Function	
Camera resolution	RGB + IR (2MP)	Language	Chinese, English, Thai
Camera FOV	D: 69.5° H: 61.6° V: 35°	Remote unlock	Support
Minimum FR illuminance	0 lux (without compensation light)	Anti-passback	Support (API Supported)
WDR	Backlight resistance	Face anti-spoofing	Support
Voice prompt	Support	Time synchronization	Support
Interface		Standby mode	Support (can change background display)
Network interface	1* 100M Ethernet port	Mask recognition	Support
RS-485	1	Web configuration	Support
Wiegand	1 in/ 1 out	General	
Lock output	1	Wi-Fi	Support
Exit button input	1	Power supply	DC 12V, 2A
Door contact input	1	Working temperature	-20 °C to 65 °C
Alarm input	2	Working humidity	0 to 90% (Non-condensing)
Alarm output	1	Working environment	Indoor and outdoor
Power	1	Dimensions	216 mm × 115 mm × 21 mm
TAMPER	1	Protective level	IP65
USB type C	1	Housing material	PC+ABS; Aluminum alloy frame
Capacity		Net weight	440g
Card capacity	50,000	Installation	Wall mount/ Pole mount/ Turnstile
		Certifications	CE

Specification



Available accessories:

1. Turnstile bracket Model: MegACC-KZI1-240
2. Temperature module Model: MegAcc-MT-G7



No.	Name	Description
1	Visible light camera	Captures visible light images
2	Infrared camera	Captures infrared images
3	Infrared fill light	Provides fill light for the infrared camera
4	Display screen	7-inch multi-touch display screen
5	Speaker	Plays audio prompts
6	Card tap area	Users tap their cards here
7	USB port	A Type C port for connection with USB drives
8	Indicator light	Indicates the access result and power status
9	Tamper prevention button	Prevents disassembly after installation
10	RS232 debugging port	Used for troubleshooting and upgrades
11	External cable connection	Used for connection to a power source
12	Reset button	Long-press to restore to factory default settings

Contact



Address : 128, City Road, London, EC1V 2NX,
UNITED KINGDOM